



MMP-12(a.a.35-117)

Catalog No. PY-20129

Scale: 1 mg

Form: lyophilized protein

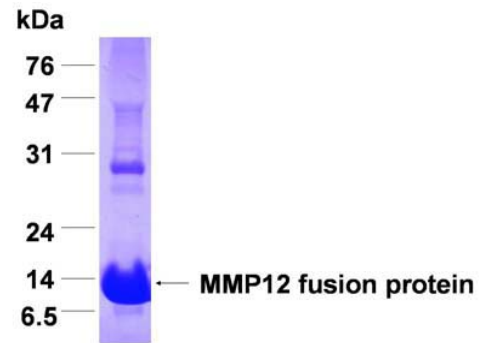
Target description

Proteins of the matrix metalloproteinase (MMP) family are involved in the breakdown of extracellular matrix in normal physiological processes, such as embryonic development, reproduction, and tissue remodeling, as well as in disease processes, such as arthritis and metastasis. Most MMP's are secreted as inactive proproteins which are activated when cleaved by extracellular proteinases. It is thought that this protein is cleaved at both ends to yield the active enzyme, but this processing has not been fully described. The enzyme degrades soluble and insoluble elastin. It may play a role in aneurysm formation and studies in mice suggest a role in the development of emphysema.

Products

E. coli derived MMP12 (aa.35-117) fusion protein

SDS PAGE analysis (Commassie blue staining)



Comments

Fusion tag : 4kDa (His-tag)

Purity : > 90%

Fusion protein size : ~15 kDa

Sequence:

L R Y L E K F Y G L E I N K L P V T K M K Y S G N L
M K E K I Q E M Q H F L G L K V T G Q L D T S T L
E M M H A P R C G V P D V H H F R E M P G G P V
W R K H Y I T Y R

Storage

Redissolve the powder with 1ml sterile water will restore to the original concentration 1mg/ml. For long-term storage at -20°C. Aliquot to avoid repeated freezing and thawing.

Application

Dilute with 1XPBS for Western blot, ELISA test antigen, Immunogen

FOR RESEARCH USE ONLY AND NOT INTENDED FOR DIAGNOSTIC OR THERAPEUTIC USE