



Cytokeratin 8 (KRT8)

Catalog No. PY-20127

Scale: 1 mg

Form: lyophilized protein

Target description

KRT8 is the type II intermediate filament chain keratin. Keratin 8, together with its filament partner keratin 18, are perhaps the most commonly found members of the intermediate filament gene family. They are expressed in single layer epithelial tissues of the body. Mutations in this gene have been linked to cryptogenic cirrhosis.

Products

E. coli derived KRT8 protein (aa. 421-484)

Comments

Fusion tag : 4kDa (His-tag)

Purity : > 90%

Fusion protein size : ~10 kDa

Sequence:

GGLSSAYGGL TSPGLSYSLG SSFGSGAGSS
SFSRTSSSRA VVVKKIETRD GKLVESSDV LPK

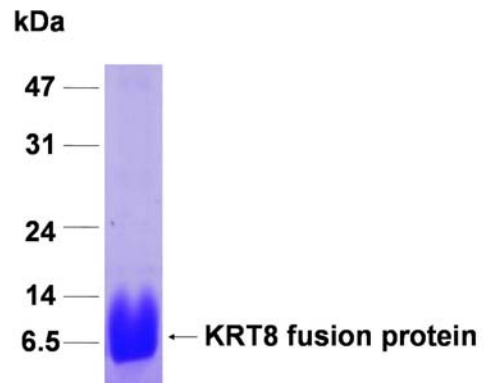
Storage

Redissolve the powder with 1ml sterile water will restore to the original concentration 1mg/ml. For long-term storage at -20°C. Aliquot to avoid repeated freezing and thawing.

Application

Dilute with 1XPBS for Western blot, ELISA test antigen, Immunogen

SDS PAGE analysis (Commassie blue staining)



15% SDS PAGE gel