



Estrogen receptor 2 (ESR2)

Catalog No. PY-20124

Scale: 1 mg

Form: lyophilized protein

Target description

Estrogen receptor-beta (ESR2) is a member of the superfamily of nuclear receptors, which can transduce extracellular signals into transcriptional responses.

Products

E. coli derived ESR2 protein (aa.216-316)

Comments

Protein ID : GI:94538328

Fusion tag : 4kDa (His-tag)

Purity : > 90%

Fusion protein size : ~ 10 kDa

Sequence:

CGSR RERCGYRLVR RQRSADEQLH CAGKAKRSGG
HAPRVRELLL DALSPQLVL TLLEAEPPHV LISRPSAPFT
EASMMMSLTKLADKELVHMI SWAKKI

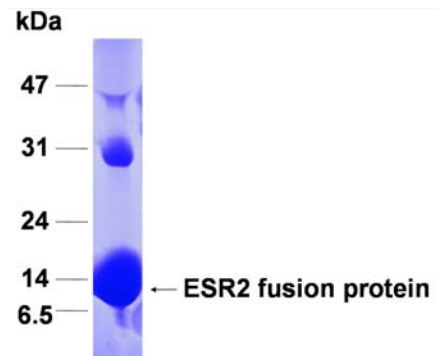
Storage

Redissolve the powder with 1ml sterile water will restore to the original concentration 1mg/ml. For long-term storage at -20°C. Aliquot to avoid repeated freezing and thawing.

Application

Dilute with 1XPBS for Western blot, ELISA test antigen, Immunogen

SDS PAGE analysis (Commassie blue staining)



15% SDS PAGE gel

FOR RESEARCH USE ONLY AND NOT INTENDED FOR DIAGNOSTIC OR THERAPEUTIC USE