



Connective tissue growth factor (CTGF)(aa.253-348)

Catalog No. PY-20084

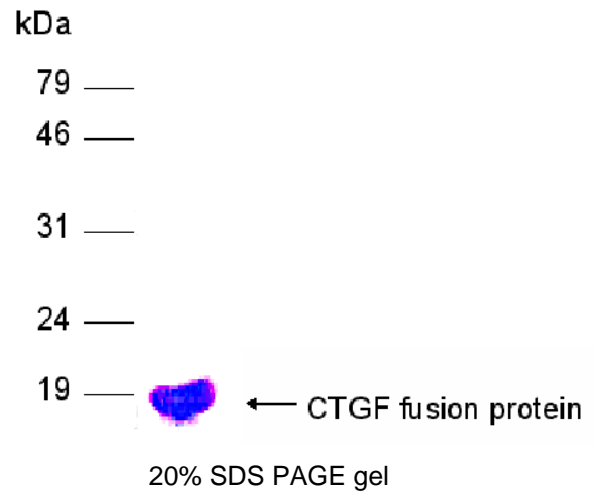
Scale: 1 mg

Form: lyophilized protein

Target description

Connective Tissue Growth Factor (CTGF) is a member of the CCN family of proteins, which regulates biological processes including stimulation of cell proliferation, migration, and adhesion. Five of the known six CCN family members have been implicated or directly regulate angiogenic responses in specific disease models, and many are over-expressed in various tumors of diverse tissue origin. In many cases the degree of CCN over-expression has been highly correlated with the stage of tumor progression in humans. CTGF and Cyr61 are the most highly studied and exhibit the highest correlations in pancreatic, breast and glial tumors. In several published reports, over-expression of CTGF and Cyr61 has been causally linked with tumor invasiveness and metastasis, particularly metastasis to bone.

SDS PAGE analysis (Commassie blue staining)



Products

E. coli derived CTGF (aa. 253-348) fusion protein with His tag

Comments

Protein ID : GI:4503123

Fusion tag : 4kDa (His-tag)

Purity : > 90%

Fusion protein size : 17 kDa

Buffer : 1X PBS

Storage

Redissolve the powder with 1ml sterile water will restore to the original concentration 1mg/ml. For long-term storage at -20°C. Aliquot to avoid repeated freezing and thawing.

Application

Dilute with 1XPBS for Western blot, ELISA test antigen, Immunogen