



Insulin-like growth factor-binding protein 6 (IGFBP6)

Catalog No. PY-20094

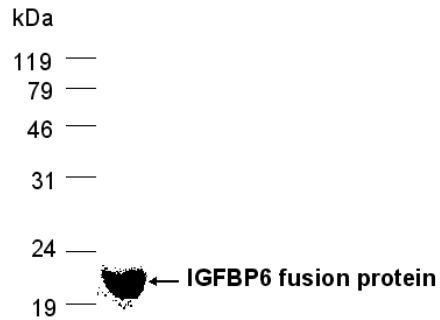
Scale: 1 mg

Form: lyophilized protein

Target description

The insulin-like growth factors (IGF-I and IGF-II) are peptides with both growth-promoting and insulin-like metabolic effects. The IGFs interact with and are modulated by a group of six IGF-binding proteins (IGFBP-1 through IGFBP-6). Insulin-like growth factor-binding protein 6 (IGFBP6), an extracellular protein with preferential affinity for insulin-like growth factor (IGF) II, belongs to a family of binding proteins.

SDS PAGE analysis (Commassie blue staining)



20% SDS PAGE gel

Products

E. coli derived IGFBP6 (aa. 148-240) fusion protein with His tag

Comments

Protein ID : GI:5114051

Fusion tag : 4kDa (His-tag)

Purity : > 80%

Fusion protein size : 20 kDa

Storage

Redissolve the powder with 1ml sterile water will restore to the original concentration 1mg/ml. For long-term storage at -20°C. Aliquot to avoid repeated freezing and thawing.

Application

Dilute with 1XPBS for Western blot, ELISA test antigen, Immunogen