



# Leptin

**Catalog No.** PY-20050

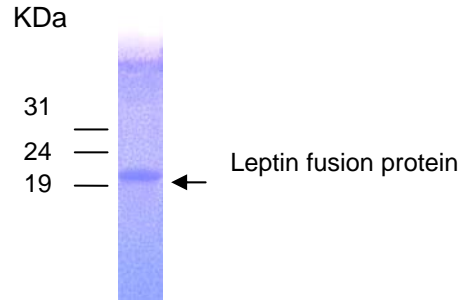
**Scale:** 1 mg

**Form:** lyophilized protein

## Target description

Leptin is a protein hormone with important effects in regulating body weight, metabolism and reproductive function. The protein is approximately ~16 kDa in mass and encoded by the obese (ob) gene. Leptin is expressed predominantly by adipocytes, which fits with the idea that body weight is sensed as the total mass of fat in the body. Smaller amounts of leptin are also secreted by cells in the epithelium of the stomach and in the placenta. Leptin receptors are highly expressed in areas of the hypothalamus known to be important in regulating body weight, as well as in T lymphocytes and vascular endothelial cells.

## SDS PAGE analysis (Commassie blue staining)



20% SDS PAGE gel

## Products

**E. coli derived Leptin (aa. 48-167) fusion protein with His tag**

## Comments

**Protein ID : BAA09787.1**

**Fusion tag : 4kDa (His-tag)**

**Purity : > 90%**

**Fusion protein size : 19 kDa**

## Storage

Redissolve the powder with 1ml sterile water will restore to the original concentration 1mg/ml. For long-term storage at -20°C. Aliquot to avoid repeated freezing and thawing.

## Application

Dilute with 1XPBS for Western blot, ELISA test antigen, Immunogen