

Anti-Human CRH (a.a.13-87), Chicken-Polyclonal Antibody

Catalog No. PY-10286

Antigen species: Human

Host species: Chicken

Quantity: 100µg

Reactivity: Human

Form: Antigen affinity purified antibody

Applications: Western blot

Target description

CRH, Corticotropin-releasing factor, CRF, corticoliberin, corticotropin-releasing hormone. CRH is the major regulator of the adaptive response to internal or external stresses. CRF regulates adrenal function indirectly through the central nervous system (CNS) via the hypothalamic-pituitary-adrenal (HPA) axis and via the autonomic nervous system by way of locus coeruleus in the brain stem. CRF and its related peptides, the urocortins (UCN1, UCN2 and UCN3), their receptors as well as the endogenous pseudo-receptor CRF-binding protein are all expressed in adrenal cortical, medullary chromaffin and resident immune cells.

Antigen

This polyclonal antibody was raised by immunizing chicken with E. coli derived protein (13-87 amino acids).

Application

ELISA, Western blotting, tissue or cell immunostaining. Recommended starting dilution for Western blot analysis is 1:3000, for tissue or cell staining is 1:200.

Related Products

1. Anti-Human CRH(146-196), Chicken-poly (PY-10287)
2. Anti-Human CRH(43-196), Chicken-poly (PY-10288)

kDa

30 —

24 —

17 — ● ← CRH fusion protein

400ng E. coli derived protein as test antigen.

Western Blot Protocol

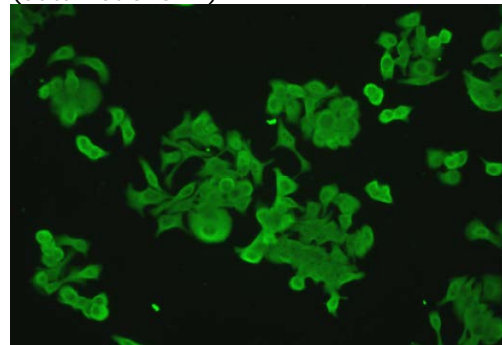
1. Block membrane with 5% non-fat milk in PBS-T for 1 hour at room temperature or longer at 4°C.
2. Incubate membrane with IgY antibodies at dilution of 1: 5,000 with 1% milk in PBS-T at R.T. for 1 h.
3. Rinse 3 times with PBS-T, then wash membrane with PBS-T, 5 min each, total

of 3 times.

4. Incubate with 2nd antibody (goat-anti-IgY/Fc-HRP) at dilution 1:10,000 for ECL (with 1% milk PBS-T) at R.T. for 1h.
5. Rinse 3 times with PBS-T, then wash with PBS-T, 5 min each with shaking, total of 3 times.
6. Perform ECL detection of signal using Pierce ECL kit.

Immunocytochemistry Staining

Immunofluorescent staining of human neuroendocrine (NE) cells expressing CRH. Affinity-purified IgY dilution 1:800. Donkey anti-chicken IgY conjugated to fluorescein 1:100. CRH-negative cells showed normal background (data not shown).



Storage

It is supplied as antigen affinity purified antibody in lyophilized powder. Redissolve the powder with 100 microliter sterile water will restore to the original concentration 1mg/ml (1×PBS). Store at 4°C for short-term application. For long-term storage, aliquot and store at -20°C.

References

1. Tsatsanis. C., Dermitzaki. E., Venihaki. M., Chatzaki. E., Minas. V., Gravanis. A, Margioris AN. The corticotropin-releasing factor or (CRF) family of peptides as local modulators of adrenal function. Cell Mol Life Sci. 2007 Jul; 64(13):1638-55.
2. Gallagher JP, Orozco-Cabal LF, Liu J, Shinnick-Gallagher P. Synaptic physiology of central CRH system. Eur J Pharmacol. 2008 Apr 7; 583(2-3): 215-25. Epub 2008 Feb 1.

FOR RESEARCH USE ONLY AND NOT INTENDED FOR DIAGNOSTIC OR THERAPEUTIC USE