



Anti- Haptoglobin, Chicken-Polyclonal Antibody

Catalog No. PY-10281

Antigen species: Human

Host species: Chicken

Quantity: 1mg

Reactivity: Human

Form: Total IgY antibody

Applications tested: ELISA, Western Blot

Target description

Haptoglobin is a positive acute phase protein that binds free hemoglobin and removes it from the circulation to prevent kidney injury, and iron loss following hemolysis. Three major haptoglobin phenotypes are known to exist (Hp 1-1, Hp 2-1, and Hp 2-2). Hp 1-1 is biologically the most effective in binding free hemoglobin and suppressing inflammatory responses associated with free hemoglobin. Hp 2-2 is biologically the least active, and Hp 2-1 is moderately active.

Antigen

This polyclonal antibody was raised by immunizing chicken with Haptoglobin serum protein.

Application

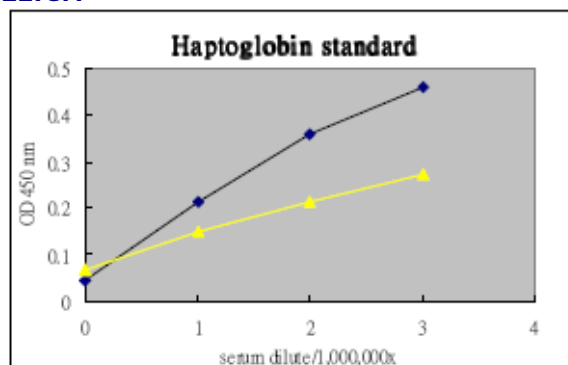
Western Blot, Tissue staining, ELISA.

1:2000 or up for Western Blot. Optimal working dilutions must be determined by the end user.

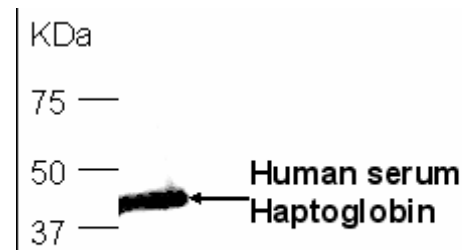
Related Products

1. Anti-Haptoglobin beta chain, Chicken-Poly (PY-10125)

ELISA



- A: coating chicken anti-Hp (10ug/ml) vs. mouse anti-Hp
- B: coating chicken anti-Hp (1ug/ml) vs. mouse anti-Hp



2µl human serum as test antigen.

Western blot Protocol

1. Block membrane with 5% non-fat milk in PBS-T for 1 hour at room temperature or longer at 4°C.
2. Incubate membrane with IgY antibodies at dilution of 1: 10,000 with 1% milk in PBS-T at R.T. for 1 h.
3. Rinse 3 times with PBS-T, then wash membrane with PBS-T, 5 min each, total of 3 times.
4. Incubate with 2nd antibody (goat-anti-IgY/Fc-HRP) at dilution 1: 10,000 for ECL (with 1% milk PBS-T) at R.T. for 1 h.
5. Rinse 3 times with PBS-T, then wash with PBS-T, 5 min each with shaking, total of 3 times.
6. Perform ECL detection of signal using Pierce ECL kit.

Storage

It is supplied as total IgY antibody in lyophilized powder. Redissolve the powder with 100 microliter sterile water will restore to the original concentration 10mg/ml (1x PBS). Store at 4°C for short-term application. For long-term storage, aliquot and store at -20°C.

References

1. Sadrzadeh SM, Bozorgmehr J. Am J Clin Pathol. 2004 Jun; 121 Suppl: S97-104.
2. Van Vlierberghe H, Langlois M, Delanghe J. Clin Chim Acta. 2004 Jul; 345(1-2):35-42.