



Anti-RA-regulated nuclear matrix-associated protein (L2DTL), Chicken-Polyclonal Antibody

Catalog No. PY-10271
Antigen species: Human
Host species: Chicken

Quantity: 100 μ g
Reactivity: Human
Form: Antigen affinity purified antibody

Applications: Western blot

Target description

RA-regulated nuclear matrix-associated protein, L2DTL, CDW1, RAMP, DTL (Human). Human homologue of *Drosophila* lethal (2) denticleless protein (L2DTL) was found to associate with CUL4 and DDB1 and cell cycle-regulated nuclear and centrosome protein, in aggressive hepatocellular carcinoma. L2DTL also interacts with replication licensing protein CDT1 in vivo. Loss of L2DTL in *Drosophila* S2 and human cells suppressed proteolysis of CDT1 in response to DNA damage.

Antigen

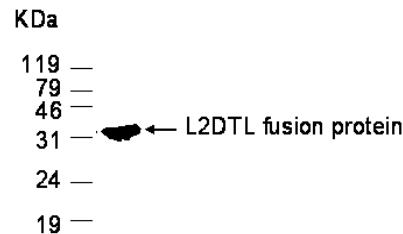
This polyclonal antibody was raised by immunizing chicken with fusion protein (1-231 amino acids).

Application

Western blotting, tissue or cell immunostaining. Recommended starting dilution for Western blot analysis is 1: 3,000, for tissue or cell staining is 1: 150. Optimal working dilutions must be determined by the end user.

Related Products

1. Anti-Amyloid β (1-40), rabbit pAb (GB-10536)
2. Anti-Amyloid β (37-42), rabbit pAb (GB-10370)
3. Anti-human fibrinogen, rabbit pAb (PG-10006)
4. Anti-Taxol, rabbit pAb (PG-10007)
5. Anti-Troponin I (TNNI3), chicken pAb (PY-10206)



E. coli derived fusion protein as test antigen.

Western blot protocol

1. Block membrane with 5% non-fat milk in PBS-T for 1 hour at room temperature or longer at 4°C.
2. Incubate membrane with IgY antibodies at dilution of 1: 5,000 with 1% milk in PBS-T at R.T. for 1 h.
3. Rinse 3 times with PBS-T, then wash membrane with PBS-T, 5 min each, total of 3 times.
4. Incubate with 2nd antibody (goat-anti-IgY/Fc-HRP) at dilution 1: 10,000 for ECL (with 1% milk PBS-T) at R.T. for 1 h.
5. Rinse 3 times with PBS-T, then wash with PBS-T, 5 min each with shaking, total of 3 times.
6. Perform ECL detection of signal using Pierce ECL kit.

Storage

It is supplied as antigen affinity purified antibody in lyophilized powder. Redissolve the powder with 100 microliter sterile water will restore to the original concentration 1mg/ml (1 \times PBS). Store at 4°C for short-term application. For long-term storage, aliquot and store at -20°C.

References

1. Pan HW, Chou HY, Liu SH, Peng SY, Liu CL, Hsu HC. Role of L2DTL, cell cycle-regulated nuclear and centrosome protein, in aggressive hepatocellular carcinoma. *Cell Cycle*. 2006 Nov; 5(22):2676-87. Epub 2006 Nov 15.