



Anti-Enterovirus 71, capsid (VP3/VP4), Chicken-Polyclonal Antibody

Catalog No. PY-10268

Antigen species: Enterovirus 71

Host species: Chicken

Quantity: 100 μ g

Reactivity: Enterovirus 71

Form: Antigen affinity purified antibody

Applications: Western blot

Target description

Enterovirus 71, capsid protein VP3/VP4 mixed

Antigen

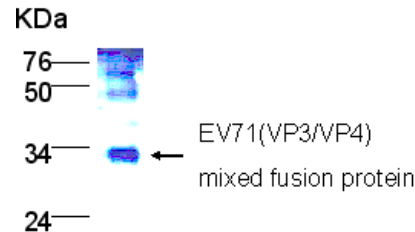
This polyclonal antibody was raised by immunizing chicken with full length VP3/VP4 mixed protein.

Application

The antibody titer is more than 5000 for Western blotting. It has not been tested in the other applications. However, for the first testing, we recommend 1/10000 dilution for ELISA, 1/5000 dilution for WB of recombinant protein, 1/400 dilution for tissue extracts or cell lysates, 1/100 dilution for immuno-histochemistry (IHC) staining on frozen cryosections, 1/50 dilution for IHC staining on paraffin embedded sections.

Related Products

1. Anti-EV71 (VP1, VP2 mixture), Chicken pAb (PY-10267)



Western blot Protocol

1. Block membrane with 5% non-fat milk in PBS-T for 1 hour at room temperature or longer at 4°C.
2. Incubate membrane with IgY antibodies at dilution of 1: 5,000 with 1% milk in PBS-T at R.T. for 1 h.
3. Rinse 3 times with PBS-T, then wash membrane with PBS-T, 5 min each, total of 3 times.
4. Incubate with 2nd antibody (goat-anti-IgY/Fc-HRP) at dilution 1:1,000 for ECL (with 1% milk PBS-T) at R.T. for 1h.
5. Rinse 3 times with PBS-T, then wash with PBS-T, 5 min each with shaking, total of 3 times.
6. Perform ECL detection of signal using Pierce ECL kit.

Storage

It is supplied as antigen affinity purified antibody in lyophilized powder. Redissolve the powder with 100 microliter sterile water will restore to the original concentration 1mg/ml (1 \times PBS). Store at 4°C for short-term application. For long-term storage, aliquot and store at -20°C.

References

1. Brown, B.A., and Pallansch, M.A., Complete nucleotide sequence of enterovirus 71 is distinct from poliovirus. *Virus Res.* 39 (2-3), 195-205 (1995)

FOR RESEARCH USE ONLY AND NOT INTENDED FOR DIAGNOSTIC OR THERAPEUTIC USE