



Anti-Thioredoxin, Chicken Polyclonal Antibody

Catalog No. PY-10241
Antigen species: Human
Host species: Chicken

Quantity: 100 μ g
Reactivity: Human, Rat
Form: Antigen affinity purified antibody

Applications: Western blot

Target description

thioredoxin (Trx) and its related molecules have expanded dramatically recently. Proteins that share the similar active-site sequence, -Cys-Xxx-Yyy-Cys-, are called the Trx family, and the number of Trx family members is increasing. Thioredoxins are small globular proteins that proved to be excellent model for investigating the relationship between the structure of protein and their physico-chemical and functional properties.

Antigen

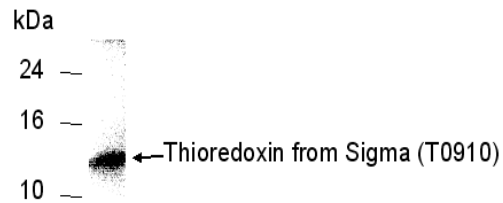
This polyclonal antibody was raised by immunizing chicken with thioredoxin (1-60 amino acids) protein.

Application

Western blotting, tissue or cell immunostaining. Recommended starting dilution for Western blot analysis is 1:3000(ECL method), for tissue or cell staining is 1:200. Optimal working dilutions must be determined by the end user.

Related Products

1. Anti-Amyloid β (1-40), rabbit pAb (GB-10536)
2. Anti-Amyloid β (37-42), rabbit pAb (GB-10370)
3. Anti-human fibrinogen , rabbit pAb (PG-10006)
4. Anti-Taxol , rabbit pAb (PG-10007)
5. Anti-Troponin I (TNNI3), chicken pAb (PY-10206)



200ng human Thioredoxin protein (from Sigma) as test antigen.

Western blot protocol

1. Block membrane with 5% non-fat milk in PBS-T for 1 hour at room temperature or longer at 4°C.
2. Incubate membrane with IgY antibodies at dilution of 1: 2,000 with 1% milk in PBS-T at R.T. for 1 h.
3. Rinse 3 times with PBS-T, then wash membrane with PBS-T, 5 min each, total of 3 times.
4. Incubate with 2nd antibody (goat-anti-IgY/Fc-HRP) at dilution 1:10,000 for ECL (with 1% milk PBS-T) at R.T. for 1 h.
5. Rinse 3 times with PBS-T, then wash with PBS-T, 5 min each with shaking, total of 3 times.
6. Perform ECL detection of signal using Pierce ECL kit.

Storage

It is supplied as antigen affinity purified antibody in lyophilized powder. Redissolve the powder with 100 microliter sterile water will restore to the original concentration 1mg/ml (1 \times PBS). Store at 4°C for short-term application. For long-term storage, aliquot and store at -20°C.

References

1. Stefankova, P., Kollarova, M., Barak, I. Gen Physiol Biophys. Thioredoxin - structural and functional complexity. *Gen Physiol Biophys*. 2005 Mar; 24(1):3-11.
2. Nakamura, H. Thioredoxin and its related molecules: update 2005. *Antioxid Redox Signal*. 2005 May-Jun; 7(5-6):823-8.