



Anti-Transthyretin precursor (TTR), Chicken Polyclonal Antibody

Catalog No. PY-10237

Antigen species: Human

Host species: Chicken

Quantity: 100µg

Reactivity: Human

Form: Antigen affinity purified antibody

Applications: Western blot, IHC

Target description

Thyroid hormone-binding protein. Probably transports thyroxine from the bloodstream to the brain. Homotetramer. Secreted. Most abundant in the choroid plexus. Also present in the liver. Each monomer has two 4-stranded beta sheets and the shape of a prolate ellipsoid. Antiparallel beta-sheet interactions link monomers into dimers. A short loop from each monomer forms the main dimer-dimer interaction. These two pairs of loops separate the opposed, convex beta-sheets of the dimers to form an internal channel.

Antigen

This polyclonal antibody was raised by immunizing chicken with TTR (20-68 amino acids) protein.

Application

Western blotting, tissue or cell immunostaining. Recommended starting dilution for Western blot analysis is 1:3000(ECL method), for tissue or cell staining is 1:200.

Related Products

1. Anti-Amyloid β (1-40), rabbit pAb (GB-10536)
2. Anti-Amyloid β (37-42), rabbit pAb (GB-10370)
3. Anti-human fibrinogen, rabbit pAb (PG-10006)
4. Anti-Taxol, rabbit pAb (PG-10007)
5. Anti-Troponin I (TNNI3), chicken pAb (PY-10206)

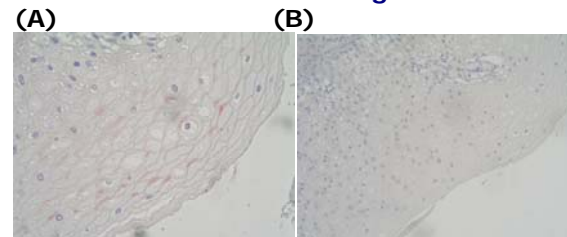
kDa

24 —
19 —  ← TTR fusion protein

Western blot protocol

1. Block membrane with 5% non-fat milk in PBS-T for 1 hour at room temperature or longer at 4°C.
2. Incubate membrane with IgY antibodies at dilution of 1: 2,000 with 1% milk in PBS-T at R.T. for 1 h.
3. Rinse 3 times with PBS-T, then wash membrane with PBS-T, 5 min each, total of 3 times.
4. Incubate with 2nd antibody (goat-anti-IgY/Fc-HRP) at dilution 1:10,000 for ECL (with 1% milk PBS-T) at R.T. for 1 h.
5. Rinse 3 times with PBS-T, then wash with PBS-T, 5 min each with shaking, total of 3 times.
6. Perform ECL detection of signal using Pierce ECL kit.

AEC method Tissue staining:



(A) oral cancer epithelium, TTR (1: 150)
(B) oral epithelium, negative control

Storage

It is supplied as antigen affinity purified antibody in lyophilized powder. Redissolve the powder with 100 microliter sterile water will restore to the original concentration 1mg/ml (1×PBS). Store at 4°C for short-term application. For long-term storage, aliquot and store at -20°C.

References

1. Sasaki, H., Yoshioka, N., Takagi, Y. and Sakaki, Y. Structure of the chromosomal gene for human serum prealbumin. *Gene* 37 (1-3), 191-197 (1985)