



Anti-Erythropoietin (EPO), Chicken-Polyclonal Antibody

Catalog No. PY-10218
Antigen species: Human
Host species: Chicken

Quantity: 100µg
Reactivity: Human, rat, rabbit
Form: Antigen affinity purified antibody

Applications: Western Blot

Target description

Erythropoietin (Epo) stimulates red blood cell production by docking with its cognate receptor on the erythroid progenitor cell and triggering an array of signaling pathways that inhibit apoptosis and promote cell proliferation and differentiation. In its pharmaceutical forms, epoetin and darbepoetin, Epo is widely used to treat various anemias, including those associated with cancer.

Antigen

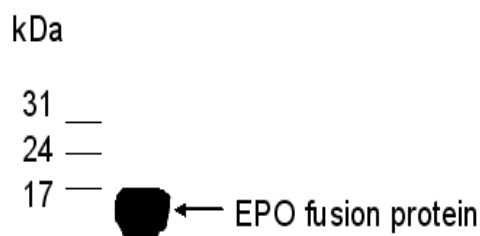
This polyclonal antibody was raised by immunizing chicken with *E coli*-derived fusion protein (aa. 10-55).

Application

Western blotting, tissue or cell immunostaining. Recommended starting dilution for Western blot analysis is 1: 3,000(ECL method), for tissue or cell staining is 1: 200. Optimal working dilutions must be determined by the end user.

Related Products

1. Anti-VEGFR3, Rabbit pAb (GB-30015)
2. Anti-Vascular endothelial growth factor (VEGF), Rabbit pAb (GB-10050)
3. Anti-Vascular endothelial growth factor (VEGF), Chicken pAb (PY-10031)
4. Anti-v-erb-b2 erythroblastic leukemia viral oncogene homolog 2 (Her2/neu a.a. 153-433), Chicken pAb (PY-10254)
5. Anti-v-erb-b2 erythroblastic leukemia viral oncogene homolog 2 (Her2/neu a.a.146-195), Chicken pAb (PY-10256)



Western Blot protocol:

1. Block membrane with 5% non-fat milk in PBS-T for 1 hour at room temperature or longer at 4°C.
2. Incubate membrane with IgY antibodies at dilution of 1: 3,000 with 1% milk in PBS-T at R.T. for 1 h.
3. Rinse 3 times with PBS-T, then wash membrane with PBS-T, 5 min each, total of 3 times.
4. Incubate with 2nd antibody (goat-anti-IgY/Fc-HRP) at dilution 1: 10,000 for ECL (with 1% milk PBS-T) at R.T. for 1 h.
5. Rinse 3 times with PBS-T, then wash with PBS-T, 5 min each with shaking, total of 3 times.
6. Perform ECL detection of signal using Pierce ECL kit.

Storage

It is supplied as antigen affinity purified antibody in lyophilized powder. Redissolve the powder with 100 microliter sterile water will restore to the original concentration 1mg/ml (1×PBS). Store at 4°C for short-term application. For long-term storage, aliquot and store at -20°C.

References

1. Sytkowski, A.J. Does erythropoietin have a dark side? Epo signaling and cancer cells. *Sci STKE*. 2007 Jul 17; 2007(395):pe38.
2. Fliser, D., Haller, H. Erythropoietin and treatment of non-anemic conditions--cardiovascular protection. *Semin Hematol*. 2007 Jul; 44(3):212-7.

FOR RESEARCH USE ONLY AND NOT INTENDED FOR DIAGNOSTIC OR THERAPEUTIC USE