



## Anti-Adiponectin 1 (a.a.1-71), Chicken-Polyclonal Antibody

**Catalog No.** PY-10204  
**Antigen species:** Human  
**Host species:** Chicken

**Quantity:** 100µg  
**Reactivity:** Human  
**Form:** Antigen affinity purified antibody

**Applications:** ELISA, Western blot

### Target description

Adiponectin is an adipose tissue-specific protein that has structural homology to collagen VIII and X and complement factor C1q, and that circulates in human plasma at high levels. A reduction in adiponectin expression is associated with insulin resistance in animal models. Administration of adiponectin has been accompanied by a reduction in plasma glucose and an increase in insulin sensitivity.

### Antigen

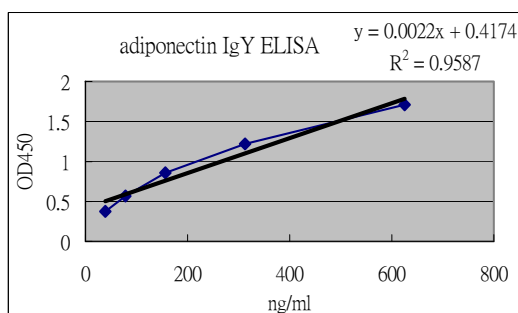
This polyclonal antibody was raised by immunizing chicken with human Adiponectin fusion protein (1~71 amino acids).

### Application

Western blotting, tissue or cell immunostaining. Recommended starting dilution for Western blot analysis is 1:3000, for tissue or cell staining is 1:200. Optimal working dilutions must be determined by the end user.

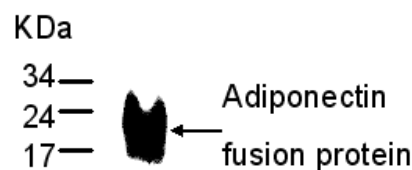
### Related Products

1. Anti-Adiponectin (72-245), Chicken-poly (PY-10207)
2. Anti-Adiponectin (72-245), Rabbit-poly (PY-10210)



### Sandwich ELISA:

ELISA plate is coated with affinity-purified IgY. Standard serum as test antigen. Affinity-purified IgG as detecting antibody Goat anti-IgY-HRP dilution: 1:4,000. TMB method for signal development.



### Western blot Protocol

1. Block membrane with 5% non-fat milk in PBS-T for 1 hour at room temperature or longer at 4°C.
2. Incubate membrane with IgY antibodies at dilution of 1: 3,000 with 1% milk in PBS-T at R.T. for 1 h.
3. Rinse 3 times with PBS-T, then wash membrane with PBS-T, 5 min each, total of 3 times.
4. Incubate with 2nd antibody (goat-anti-IgY/Fc-HRP) at dilution 1: 10,000 for ECL (with 1% milk PBS-T) at R.T. for 1 h.
5. Rinse 3 times with PBS-T, then wash with PBS-T, 5 min each with shaking, total of 3 times.
6. Perform ECL detection of signal using Pierce ECL kit.

### Storage

It is supplied as antigen affinity purified antibody in lyophilized powder. Redissolve the powder with 100 microliter sterile water will restore to the original concentration 1mg/ml (1xPBS). Store at 4°C for short-term application. For long-term storage, aliquot and store at -20°C.

### References

1. Sasaki, H., Yoshioka, N., Takagi, Y. and Sakaki, Y. Structure of the chromosomal gene for human serum prealbumin. *Gene* 37 (1-3), 191-197 (1985)