

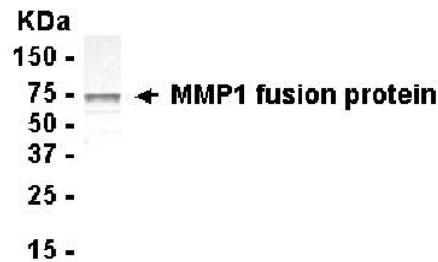


## Anti-Matrix metalloproteinase 1 (MMP1), Chicken-Polyclonal Antibody

**Catalog No.** PY-10174      **Quantity:** 100µg      **Applications tested:** Western Blot  
**Antigen species:** Human      **Reactivity:** Human, chicken  
**Host species:** Chicken      **Form:** Antigen affinity purified antibody

### Target description

Proteins of the matrix metalloproteinase (MMP) family are involved in the breakdown of extracellular matrix in normal physiological processes, such as embryonic development, reproduction, and tissue remodeling, as well as in disease processes, such as arthritis and metastasis. Most MMP's are secreted as inactive proproteins which are activated when cleaved by extracellular proteinases. This gene encodes a secreted enzyme which breaks down the interstitial collagens, types I, II, and III.



### Antigen

This polyclonal antibody was raised by immunizing chicken with human metalloproteinase type 1 fusion protein.

### Application

The antibody titer is more than 2000 for Western blotting. It has not been tested in the other applications. However, for the first testing, we recommend 1/10000 dilution for ELISA, 1/2000 dilution for WB of recombinant protein, 1/400 dilution for tissue extracts or cell lysates, 1/100 dilution for immunohistochemistry (IHC) staining on frozen cryosections, 1/50 dilution for IHC staining on paraffin embedded sections.

### Related Products

1. Anti-MMP2 pAb (GB-10342).
2. Anti-MMP17 pAb (GB-10042).
3. Anti-MMP12(a.a.35-117) pAb (PY-10169).

### Western blot Protocol

1. Block membrane with 5% non-fat milk in PBS-T for 1 hour at room temperature or longer at 4°C.
2. Incubate membrane with IgY antibodies at dilution of 1: 2,000 with 1% milk in PBS-T at R.T. for 1 h.
3. Rinse 3 times with PBS-T, then wash membrane with PBS-T, 5 min each, total of 3 times.
4. Incubate with 2nd antibody (goat-anti-IgY/Fc-HRP) at dilution 1:1,000 for ECL (with 1% milk PBS-T) at R.T. for 1 h.
5. Rinse 3 times with PBS-T, then wash with PBS-T, 5 min each with shaking, total of 3 times.
6. Perform ECL detection of signal using Pierce ECL kit.

### Storage

It is supplied as antigen affinity purified antibody in lyophilized powder. Redissolve the powder with 100 microliter sterile water will restore to the original concentration 1mg/ml (1×PBS). Store at 4°C for short-term application. For long-term storage, aliquot and store at -20°C.

### References

1. Seiki, M. Membrane-type 1 matrix metallo-proteinase: a key enzyme for tumor invasion. *Cancer Lett.* 194 (1), 1-11 (2003).

**FOR RESEARCH USE ONLY AND NOT INTENDED FOR DIAGNOSTIC OR THERAPEUTIC USE**