



Anti-SPARC-like 1 (SPARCL1), Chicken-Polyclonal Antibody

Catalog No. PY-10165 **Quantity:** 100µg **Applications tested:** Western blot
Antigen species: Human **Reactivity:** Human
Host species: Chicken **Form:** Antigen affinity purified antibody

Target description

This is a secreted protein. Found in the extracellular matrix. It's highly expressed in lymph node, brain, heart, lung, skeletal muscle, ovary, small intestine, and colon, with lower levels in placenta, pancreas, testis, spleen, and thymus, and no expression in kidney, liver, and peripheral blood leukocytes.

Antigen

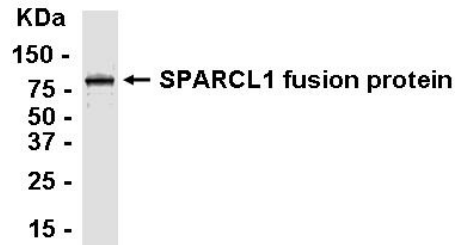
This polyclonal antibody was raised by immunizing chicken with SPARCL1 fusion protein (61-360 amino acids).

Application

Western blotting, tissue or cell immunostaining. Recommended starting dilution for Western blot analysis is 1:500, for tissue or cell staining is 1: 200. Optimal working dilutions must be determined by the end user.

Related Products

1. Anti-Cytokeratin 8 (KRT8), Chicken pAb (PY-10149).
2. Anti-Cytokeratin 18 (KRT18), Chicken pAb (PY-10150).
3. Anti- Toll-like receptor 2 (TLR2), Chicken pAb (PY-10152)
4. Anti- Toll-like receptor 3 (TLR3), Chicken pAb (PY-10154)
5. Anti- Toll-like receptor 7 (TLR7), Chicken pAb (PY-10148)



E. coli-derived fusion protein as test antigen.

Western blot Protocol

1. Block membrane with 5% non-fat milk in PBS-T for 1 hour at room temperature or longer at 4°C.
2. Incubate membrane with IgY antibodies at dilution of 1: 2,000 with 1% milk in PBS-T at R.T. for 1 h.
3. Rinse 3 times with PBS-T, then wash membrane with PBS-T, 5 min each, total of 3 times.
4. Incubate with 2nd antibody (goat-anti-IgY/Fc-HRP) at dilution 1:1,000 for ECL (with 1% milk PBS-T) at R.T. for 1h.
5. Rinse 3 times with PBS-T, then wash with PBS-T, 5 min each with shaking, total of 3 times.
6. Perform ECL detection of signal using Pierce ECL kit.

Storage

It is supplied as antigen affinity purified antibody in lyophilized powder. Redissolve the powder with 100 microliter sterile water will restore to the original concentration 1mg/ml (1x PBS). Store at 4°C for short-term application. For long-term storage, aliquot and store at -20°C.

References

Girard, J.-P.; Springer, T. A : Cloning from purified high endothelial venule cells of hevin, a close relative of the antiadhesive extracellular matrix protein SPARC. *Immunity* 2: 113-123, 1995