



## Anti-BCL2-binding protein (BAD), Chicken-Polyclonal Antibody

**Catalog No.** PY-10151      **Quantity:** 100µg      **Applications tested:** Western blot  
**Antigen species:** Human      **Reactivity:** Human, Rat  
**Host species:** Chicken      **Form:** Antigen affinity purified antibody

### Target description

This protein is a member of the BCL-2 family. BCL-2 family members are known to be regulators of programmed cell death. It positively regulates cell apoptosis by forming heterodimers with BCL-xL and BCL-2, and reversing the death repressor activity. Proapoptotic activity of protein is regulated through its phosphorylation. Protein kinases AKT and MAP kinase, and protein phosphatase calcineurin were found to be involved in the regulation of this protein. Alternative splicing of the gene results in two transcript variants which encode the same isoform.

### Antigen

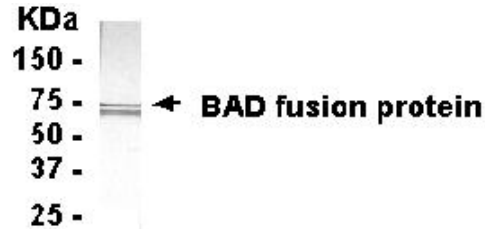
This polyclonal antibody was raised by immunizing chicken with BAD fusion protein (2-168 amino acids).

### Application

Western blotting, tissue or cell immunostaining. Recommended starting dilution for Western blot analysis is 1:500, for tissue or cell staining is 1:200. Optimal working dilutions must be determined by the end user.

### Related Products

1. Anti-Cytokeratin 8 (KRT8), Chicken pAb (PY-10149).
2. Anti-Cytokeratin 18 (KRT18), Chicken pAb (PY-10150).
3. Anti- Toll-like receptor 2 (TLR2), Chicken pAb (PY-10152)
4. Anti- Toll-like receptor 3 (TLR3), Chicken pAb (PY-10154)
5. Anti- Toll-like receptor 7 (TLR7), Chicken pAb (PY-10148)



*E coli*-derived fusion protein as test antigen.

### Western blot Protocol

1. Block membrane with 5% non-fat milk in PBS-T for 1 hour at room temperature or longer at 4°C.
2. Incubate membrane with IgY antibodies at dilution of 1: 2,000 with 1% milk in PBS-T at R.T. for 1 h.
3. Rinse 3 times with PBS-T, then wash membrane with PBS-T, 5 min each, total of 3 times.
4. Incubate with 2nd antibody (goat-anti-IgY/Fc-HRP) at dilution 1:2,000 for ECL (with 1% milk PBS-T) at R.T. for 1h.
5. Rinse 3 times with PBS-T, then wash with PBS-T, 5 min each with shaking, total of 3 times.
6. Perform ECL detection of signal using Pierce ECL kit.

### Storage

It is supplied as antigen affinity purified antibody in lyophilized powder. Redissolve the powder with 100 microliter sterile water will restore to the original concentration 1mg/ml (1×PBS). Store at 4°C for short-term application. For long-term storage, aliquot and store at -20°C.

### References

Danial, N. N.; Gramm, C. F.; Scorrano, L.; Zhang, C.-Y.; Krauss, S.; Ranger, A. M.; Datta, S. R.; Greenberg, M. E.; Licklider, L. J.; Lowell, B. B.; Gygi, S. P.; Korsmeyer, S. J.: BAD and glucokinase reside in a mitochondrial complex that integrates glycolysis and apoptosis. Nature 424: 952-956, 2003.

FOR RESEARCH USE ONLY AND NOT INTENDED FOR DIAGNOSTIC OR THERAPEUTIC USE