



Anti-Cytokeratin 18 (KRT18), Chicken-Polyclonal Antibody

Catalog No. PY-10150

Antigen species: Human

Host species: Chicken

Quantity: 100µg **Applications tested:** Western blot

Reactivity: Human, Mouse, Rat

Form: Antigen affinity purified antibody

Target description

KRT 18 is the type I intermediate filament chain keratin. Keratin 18, together with its filament partner keratin 8, are perhaps the most commonly found members of the intermediate filament gene family. They are expressed in single layer epithelial tissues of the body. Mutations in this gene have been linked to cryptogenic cirrhosis.

Antigen

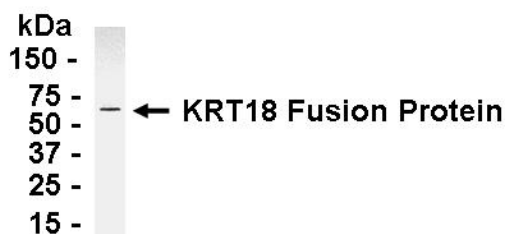
This polyclonal antibody was raised by immunizing chicken with KRT18 fusion protein (386-430 amino acids).

Application

Western blotting, tissue or cell immunostaining. Recommended starting dilution for Western blot analysis is 1:500, for tissue or cell staining is 1:200. Optimal working dilutions must be determined by the end user.

Related Products

1. Anti-Cytokeratin 8 (KRT8), Chicken pAb (PY-10149).
2. Anti- BCL2-binding protein (BAD), Chicken pAb (PY-10151)
3. Anti- Toll-like receptor 2 (TLR2), Chicken pAb (PY-10152)
4. Anti- Toll-like receptor 3 (TLR3), Chicken pAb (PY-10154)
5. Anti- Toll-like receptor 7 (TLR7), Chicken pAb (PY-10148)



E coli-derived fusion protein as test antigen.

Western blot Protocol

1. Block membrane with 5% non-fat milk in PBS-T for 1 hour at room temperature or longer at 4°C.
2. Incubate membrane with IgY antibodies at dilution of 1: 2,000 with 1% milk in PBS-T at R.T. for 1 h.
3. Rinse 3 times with PBS-T, then wash membrane with PBS-T, 5 min each, total of 3 times.
4. Incubate with 2nd antibody (goat-anti-IgY/Fc-HRP) at dilution 1:1,000 for ECL (with 1% milk PBS-T) at R.T. for 1h.
5. Rinse 3 times with PBS-T, then wash with PBS-T, 5 min each with shaking, total of 3 times.
6. Perform ECL detection of signal using Pierce ECL kit.

Storage

It is supplied as antigen affinity purified antibody in lyophilized powder. Redissolve the powder with 100 microliter sterile water will restore to the original concentration 1mg/ml (1×PBS). Store at 4°C for short-term application. For long-term storage, aliquot and store at -20°C.

References

Ku, N.-O.; Darling, J. M.; Krams, S. M.; Esquivel, C. O.; Keefe, E. B.; Sibley, R. K.; Lee, Y. M.; Wright, T. L.; Omary, M. B. : Keratin 8 and 18 mutations are risk factors for developing liver disease of multiple etiologies. Proc. Nat. Acad. Sci. 100: 6063-6068, 2003.

FOR RESEARCH USE ONLY AND NOT INTENDED FOR DIAGNOSTIC OR THERAPEUTIC USE