



Anti-Human Chorionic Gonadotropin (hCG), Chicken-Polyclonal Antibody

Catalog No. PY-10135 **Quantity:** 100µg **Applications tested:** Western Blot
Antigen species: Human **Reactivity:** Human, mouse
Host species: Chicken **Form:** Antigen affinity purified antibody

Target description

Chorionic Gonadotropin is heterodimer of an alpha and a beta chain. It stimulates the ovaries to synthesis the steroids that are essential for the maintance of pregnancy.

Antigen

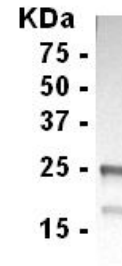
This polyclonal antibody was raised by immunizing chicken with Full Length protein from human urine..

Application

Western blotting, tissue or cell immunostaining, ELISA. Recommended starting dilution for Western blot analysis is 1: 500, for tissue or cell staining is 1: 200. The concentration for ELISA is 1-2µg/ml. Optimal working dilutions must be determined by the end user.

Related Products

1. Anti-GH, pAb (PY-10103)
2. Anti-Insulin, pAb (PY-10104)
3. Anti-Albumin, pAb(PY-10105)
4. Anti-CRP, pAb(PY-10106)



Western blot Protocol

1. Block membrane with 5% non-fat milk in PBS-T for 1 hour at room temperature or longer at 4°C.
2. Incubate membrane with IgY antibodies at dilution of 1: 2,000 with 1% milk in PBS-T at R.T. for 1 h.
3. Rinse 3 times with PBS-T, then wash membrane with PBS-T, 5 min each, total of 3 times.
4. Incubate with 2nd antibody (goat-anti-IgY/Fc-HRP) at dilution 1: 1,000 for ECL (with 1% milk PBS-T) at R.T. for 1 h.
5. Rinse 3 times with PBS-T, then wash with PBS-T, 5 min each with shaking, total of 3 times.
6. Perform ECL detection of signal using Pierce ECL kit.

Storage

It is supplied as antigen affinity purified antibody in lyophilized powder. Redissolve the powder with 100 microliter sterile water will restore to the original concentration 1mg/ml (1xPBS). Store at 4°C for short-term application. For long-term storage, aliquot and store at -20°C.

References

1. Hotakainen, K., Ljungberg, B., Haglund, C., Nordling, S., Paju, A. and Stenman, U.H. Expression of the free beta-subunit of human chorionic gonadotropin in renal cell carcinoma: prognostic study on tissue and serum. *Int. J. Cancer* 104 (5), 631-635 (2003).