



Anti- Lipoprotein Very Low Density-Polyclonal Antibody

Catalog No. PY-10134

Antigen species: Human

Host species: Chicken

Quantity: 100 μ g

Reactivity: Human

Form: Antigen affinity purified antibody

Applications tested: ELISA

Target description

Very Low Density Lipoprotein including Apolipoproteins B-100, C-I, C-II, C-III, and E. VLDL transports hepatic synthesized triglycerides and cholesterol. May counteract inhibitory effect of glucocorticoids on arachidonic acid release and prostaglandin I₂ formation in vascular smooth muscle cells.

Antigen

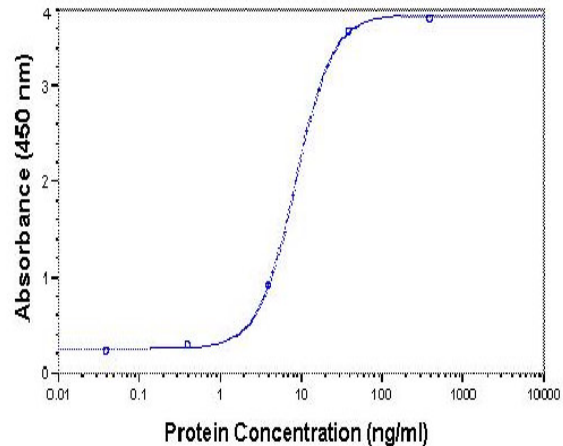
This polyclonal antibody was raised by immunizing chicken with full length human Lipoprotein Very Low Density plasma protein.

Application

ELISA, Western blotting, tissue or cell immunostaining. Recommended starting dilution for Western blot analysis is 1:500, for tissue or cell staining is 1:200, and for ELISA is 0.5-1 μ g/ml. Optimal working dilutions must be determined by the end user.

Related Products

Anti-LDL, pAb (PY-10133)



Direct ELISA Test

Serum protein as test antigen. Affi-pure IgY as primary antibody and Goat anti-IgY-HRP as 2nd antibody. Fixed amount of Antigen (1 μ g/ml) and serial dilutions of antibody.

Storage

It is supplied as antigen affinity purified antibody in lyophilized powder. Redissolve the powder with 100 microliter sterile water will restore to the original concentration 1mg/ml (1 \times PBS). Store at 4 $^{\circ}$ C for short-term application. For long-term storage, aliquot and store at -20 $^{\circ}$ C.