



Anti- Lipoprotein Low Density-Polyclonal Antibody

Catalog No. PY-10133

Antigen species: Human

Host species: Chicken

Quantity: 1mg

Reactivity: Human

Form: Total IgY antibody

Applications tested: Western blot

Target description

Apolipoprotein B is the main apolipoprotein of chylomicrons and low density lipoproteins (LDL). High serum lipid levels, especially the elevated level of low-density lipoprotein (LDL), have been shown to be strongly related to the development of atherosclerosis.

Antigen

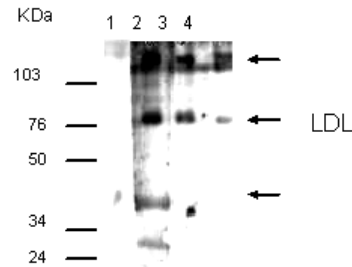
This polyclonal antibody was raised by immunizing chicken with human lipoprotein low density plasma protein.

Application

Western Blot, Tissue staining, ELISA. Recommended dilution for Western Blot Analysis is 1:1000~5000, dilution for tissue Staining analysis is 1:100~1,000. Optimal working dilutions must be determined by the end user

Related Products

1. Anti-VLDL, pAb (PY-10134)



- 1 : pre-immune total IgY 1000x dilute
- 2 : anti-LDL total IgY 1000x dilute
- 3 : anti-LDL total IgY 3000x dilute
- 4 : anti-LDL total IgY 5000x dilute

Western blot Protocol

1. Block membrane with 5% non-fat milk in PBS-T for 1 hour at room temperature or longer at 4°C.
2. Incubate membrane with IgY antibodies with 1% milk in PBS-T at R.T. for 1 h.
3. Rinse 3 times with PBS-T, then wash membrane with PBS-T, 5 min each, total of 3 times.
4. Incubate with 2nd antibody (goat-anti-IgY/Fc-HRP) at dilution 1: 10,000 for ECL (with 1% milk PBS-T) at R.T. for 1 h.
5. Rinse 3 times with PBS-T, then wash with PBS-T, 5 min each with shaking, total of 3 times.
6. Perform ECL detection of signal using Pierce ECL kit.

Storage

It is supplied as total IgY in lyophilized powder. Redissolve the powder with 100 microliter sterile water will restore to the original concentration 10mg/mL(1xPBS). Store at 4°C for short-term application. For long-term storage, aliquot and store at -20°C.

References

1. Mahley,R.W., Innerarity,T.L., Rall,S.C. Jr. and Weisgraber,K.H.J. Lipid Res. 25 (12), 1277-1294 (1984)

FOR RESEARCH USE ONLY AND NOT INTENDED FOR DIAGNOSTIC OR THERAPEUTIC USE