



Anti-IgG, Mouse, Chicken-Polyclonal Antibody

Catalog No. PY-10128

Antigen species: Mouse

Host species: Chicken

Quantity: 100 μ g

Reactivity: Mouse

Form: Antigen affinity purified antibody

Applications tested: ELISA

Target description

IgGm : IgG, Mouse

IgG is the most abundant class of antibodies found in blood serum and lymph. It is active against bacteria, fungi, viruses, and foreign particles. Immunoglobulin G antibodies trigger action of the complement system

Antigen

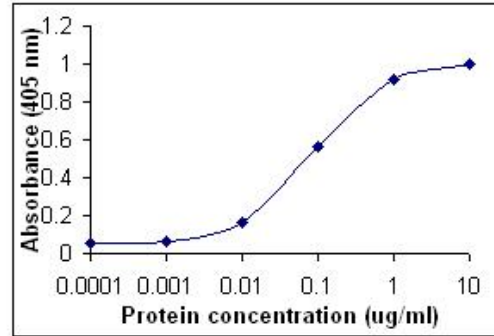
This polyclonal antibody was raised by immunizing chicken with Full length of plasma protein.

Application

Western blotting, Immunoprecipitation, ELISA. Recommended concentration for ELISA is 0.1-0.5 μ g/ml. Optimal working dilutions must be determined by the end user.

Related Products

1. Anti- IgE, pAb (PY-10111)
2. Anti-IgA, pAb (PY-10126)
3. Anti-IgG Fc frag, pAb (PY-10127)
4. Anti-IgM human, pAb (PY-10130)
5. Anti-IgG mouse, pAb (PG-10011)
6. Anti-IgG human, pAb (PG-10012)



Direct ELISA Test.

Mouse plasma IgG protein as test antigen. Affi-pure IgY as primary antibody (0.1 μ g/ml), and Goat anti-IgY-HRP as 2nd antibody

Storage

It is supplied as antigen affinity purified antibody in lyophilized powder. Redissolve the powder with 100 microliter sterile water will restore to the original concentration 1mg/ml (1xPBS). Store at 4°C for short-term application. For long-term storage, aliquot and store at -20°C.

References

1. McKelvey EM, Fahey JL. Immunoglobulin changes in disease: quantitation on the basis of heavy polypeptide chains, IgG (gammaG), IgA (gammaA), and IgM (gammaM), and of light polypeptide chains, type K (I) and type L (II). J Clin Invest. 44(11):1778-87(1965).
2. Prahl JW. Enzymic degradation of the Fc fragment of rabbit immunoglobulin IgG. Biochem J. 104(2):647-55(1967).
3. Alepa FP. Antigenic factors characteristic of human immunoglobulin G, detected in the sera of non-human primates. Primates Med. 1(0): 1-9(1968).