



## Anti-IgA, Chicken-Polyclonal Antibody

**Catalog No.** PY-10126

**Antigen species:** Human

**Host species:** Chicken

**Quantity:** 100 $\mu$ g

**Reactivity:** Human

**Form:** Antigen affinity purified antibody

**Applications tested:** Western Blot

### Target description

The most important weapon in the defense of diseases in the human organism is Y-shaped antibodies, the so-called immunoglobulins (Ig). Many quintillions of antibodies with more than a trillion different specificities are found in the blood of the human body. These subdivide themselves - as within all mammals - into five different antibody types: IgM, IgG, IgA, IgD and IgE. Every class has its own particular characteristic that makes it possible to adopt a certain defense function. IgA for example, can be transported through the uppermost layer of the skin and is found in saliva, sweat and tears.

### Antigen

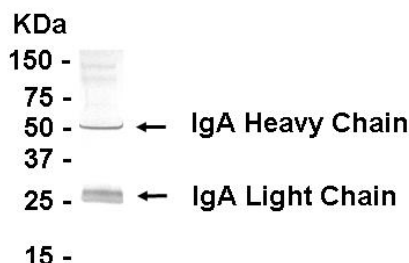
This polyclonal antibody was raised by immunizing chicken with full-length (plasma protein).

### Application

Western blotting, tissue or cell immunostaining, and ELISA. Recommended starting dilution for Western blot analysis is 1:500 (Colorimetric method), for tissue or cell staining is 1:200. Optimal working dilutions must be determined by the end user.

### Related Products

1. Anti- IgE, pAb (PY-10111)
2. Anti-IgG Fc fragment, pAb (PY-10127)
3. Anti-IgG mouse, pAb (PY-10128)
4. Anti-IgM human, pAb (PY-10130)
5. Anti-IgG mouse, pAb (PG-10011)
6. Anti-IgG human, pAb (PG-10012)



### Western blot Protocol

1. Block membrane with 5% non-fat milk in PBS-T for 1 hour at room temperature or longer at 4°C.
2. Incubate membrane with IgY antibodies at dilution of 1: 500 with 1% milk in PBS-T at R.T. for 1 h.
3. Rinse 3 times with PBS-T, then wash membrane with PBS-T, 5 min each, total of 3 times.
4. Incubate with 2nd antibody (goat-anti-IgY/Fc-HRP) at dilution 1: 1,000 for ECL (with 1% milk PBS-T) at R.T. for 1 h.
5. Rinse 3 times with PBS-T, then wash with PBS-T, 5 min each with shaking, total of 3 times.
6. Perform ECL detection of signal using Pierce ECL kit.

### Storage

It is supplied as antigen affinity purified antibody in lyophilized powder. Redissolve the powder with 100 microliter sterile water will restore to the original concentration 1mg/ml (1 xPBS). Store at 4°C for short-term application. For long-term storage, aliquot and store at -20°C.

### References

1. Coombs RR, Jonas WE, Lachmann PJ, Feinstein A. Detection of IgA antibodies by the red cell linked antigen-antiglobulin reaction: antibodies in the sera of infants to milk proteins. *Int Arch Allergy Appl Immunol*, 27(6):321-37(1965).
2. McKelvey EM, Fahey JL. Immunoglobulin changes in disease: quantitation on the basis of heavy polypeptide chains, IgG (gammaG), IgA (gammaA), and IgM (gammaM), and of light polypeptide chains, type K (I) and type L (II). *J Clin Invest*. 44(11):1778-87(1965).