

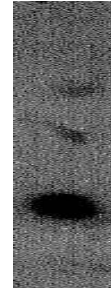


Anti-Serum complement C1q, Chicken-Polyclonal Antibody

Catalog No. PY-10118 **Quantity:** 100 μ g **Applications tested:** Western Blot
Antigen species: Human **Reactivity:** Human
Host species: Chicken **Form:** Antigen affinity purified Antibody

Target description

C1q associates with the proenzymes C1R and C1S to yield C1, the first component of the serum complement system. Deficiency of C1q has been associated with lupus erythematosus and glomerulonephritis. C1q is composed of 18 polypeptide chains: six A-chains, six B-chains, and six C-chains. Each chain contains a collagen-like region located near the N terminus and a C-terminal globular region. The A-, B-, and C-chains are arranged in the order A-C-B on chromosome 1.



Antigen

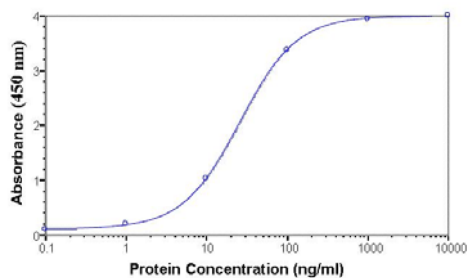
This polyclonal antibody was raised by immunizing chicken with human plasma C1q protein.

Application

The antibody specificity was assayed by Western blot analysis with Human plasma C1q protein. The antibody titer is more than 5,000 for Western blotting. It has not been tested in the other applications. However, for the first testing, we recommend 1/10,000 dilution for ELISA, 1/5,000 dilution for WB of recombinant protein, 1/400 dilution for tissue extracts or cell lysates, 1/100 dilution for immunohistochemistry (IHC) staining on frozen cryosections, 1/50 dilution for IHC staining on paraffin embedded sections.

Related Products

1. Anti-serum complement C3, poly Ab (PY-10119)



ELISA Standard Curve (Direct ELISA)

Human plasma C1q protein as test antigen.
Affi-pure IgY as primary antibody (1.0 μ g/ml),
and Goat anti-IgY-HRP as 2nd antibody

Western blot Protocol

1. Block membrane with 5% non-fat milk in PBS-T for 1 hour at room temperature or longer at 4°C.
2. Incubate membrane with IgY antibodies at dilution of 1: 5,000 with 1% milk in PBS-T at R.T. for 1 h.
3. Rinse 3 times with PBS-T, then wash membrane with PBS-T, 5 min each, total of 3 times.
4. Incubate with 2nd antibody (goat-anti-IgY/Fc-HRP) at dilution 1: 10,000 for ECL (with 1% milk PBS-T) at R.T. for 1 h.
5. Rinse 3 times with PBS-T, then wash with PBS-T, 5 min each with shaking, total of 3 times.
6. Perform ECL detection of signal using Pierce ECL kit.

Storage

It is supplied as antigen affinity purified antibody in lyophilized powder. Redissolve the powder with 100 microliter sterile water will restore to the original concentration 1mg/ml (1 \times PBS). Store at 4°C for short-term application. For long-term storage, aliquot and store at -20°C.

References

1. Leigh LE *et al.* C1q-mediated chemotaxis by human neutrophils: involvement of gC1qR and G-protein signalling mechanisms. *Biochem J* 330:247-54 (1998).