



Anti-Apolipoprotein B (Apo B100), Chicken-Polyclonal Antibody

Catalog No. PY-10117 **Quantity:** 100µg **Applications tested:** Western blot
Antigen species: Human **Reactivity:** Human
Host species: Chicken **Form:** Antigen affinity purified Antibody

Target description

Apolipoprotein B is the main apolipoprotein of chylomicrons and low density lipoproteins (LDL). The protein occurs in the plasma in 2 main isoforms, apoB-48 and apoB-100. The first is synthesized exclusively by the gut, the second by the liver. The intestinal (B-48) and hepatic (B-100) forms of apoB are coded by a single gene and by a single mRNA transcript larger than 16 kb. Apolipoprotein B-48, a shortened form of apoB-100 lacking the LDL-receptor region.

Antigen

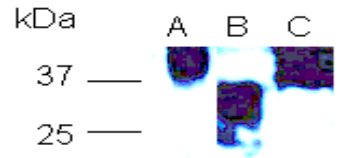
This polyclonal antibody was raised by immunizing chicken with human apolipoprotein B plasma protein(a.a.1397-3000) that be derived by *E.coli*

Application

The antibody specificity was assayed by Western blotting with *E. coli* derived albumin serum protein. The antibody titer is more than 5,000 for Western blotting. It has not been tested in the other applications. However, for the first testing, we recommend 1/10,000 dilution for ELISA, 1/5,000 dilution for WB of recombinant protein, 1/400 dilution for tissue extracts or cell lysates, 1/100 dilution for immunohisto-chemistry (IHC) staining on frozen cryosections, 1/50 dilution for IHC staining on paraffin embedded sections.

Related Products

1. Anti-Apo A1, pAb (PY-10116)



ApoB fusion protein

A,B,C: 1397-3000a.a.

Western blot Protocol

1. Block membrane with 5% non-fat milk in PBS-T for 1 hour at room temperature or longer at 4°C.
2. Incubate membrane with IgY antibodies at dilution of 1: 5,000 with 1% milk in PBS-T at R.T. for 1 h.
3. Rinse 3 times with PBS-T, then wash membrane with PBS-T, 5 min each, total of 3 times.
4. Incubate with 2nd antibody (goat-anti-IgY/Fc-*HRP*) at dilution 1: 1,000 for ECL (with 1% milk PBS-T) at R.T. for 1 h.
5. Rinse 3 times with PBS-T, then wash with PBS-T, 5 min each with shaking, total of 3 times.
6. Perform ECL detection of signal using Pierce ECL kit.

Storage

It is supplied as antigen affinity purified antibody in lyophilized powder. Redissolve the powder with 100 microliter sterile water will restore to the original concentration 1mg/ml (1 x PBS). Store at 4°C for short-term application. For long-term storage, aliquot and store at -20°C.

References

1. Mahley, R.W., Innerarity, T.L., Rall, S.C. Jr. and Weisgraber, K.H. J. *Lipid Res.* 25 (12), 1277-1294 (1984)

FOR RESEARCH USE ONLY AND NOT INTENDED FOR DIAGNOSTIC OR THERAPEUTIC USE