



## Anti-Apolipoprotein A1, Chicken-Polyclonal Antibody

**Catalog No.** PY-10116    **Quantity:** 1mg    **Applications tested:** Western blot, IHC  
**Antigen species:** Human    **Reactivity:** Human, chicken  
**Host species:** Chicken    **Form:** Total IgY antibody

### Target description

Apolipoprotein A-I, the major protein constituent of HDL. Recent studies have revealed that HDL quality (e.g. HDL apolipoprotein and lipid content, including oxidized lipids, particle size and electrophoretic mobility, associated enzymatic activities, inflammatory/anti-inflammatory properties, and ability to promote cholesterol efflux) may be more important than HDL-cholesterol levels.

### Antigen

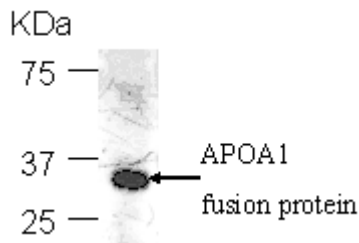
This polyclonal antibody was raised by immunizing chicken with human serum protein ApoA1 that be derived by *E. coli*

### Application

Western blotting, tissue or cell immunostaining. Recommended starting dilution for Western blot analysis is 1: 4,000 (ECL method), for tissue or cell staining is 1: 1,000.

### Related Products

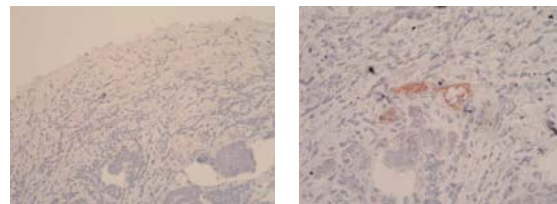
1. Anti-Apo B precursor, pAb (PY-10117)



### Western blot Protocol

1. Block membrane with 5% non-fat milk in PBS-T for 1 hour at room temperature or longer at 4°C.
2. Incubate membrane with IgY antibodies at dilution of 1: 4,000 with 1% milk in PBS-T at R.T. for 1 h.
3. Rinse 3 times with PBS-T, then wash membrane with PBS-T, 5 min each, total of 3 times.
4. Incubate with 2nd antibody (goat-anti-IgY/Fc-HRP) at dilution 1: 1,000 for ECL (with 1% milk PBS-T) at R.T. for 1 h.
5. Rinse 3 times with PBS-T, then wash with PBS-T, 5 min each with shaking, total of 3 times.
6. Perform ECL detection of signal using Pierce ECL kit.

### Tissue staining:



Breast cancer. Negative    Breast. Cancer-ApoA1  
1: 1,000X dilute

### Storage

It is supplied as total IgY in lyophilized powder. Redissolve the powder with 100 microliter sterile water will restore to the original concentration 10mg/ml (1×PBS). Store at 4°C for short-term application. For long-term storage, aliquot and store at -20°C.

### References

- 1 · Navab M, Anantharamaiah GM, Reddy ST, Van Lenten BJ, Datta G, Garber D, Fogelman AM. *Curr Opin Lipidol.* 2004 Dec; 15(6):645-9.
- 2 · Davidson WS, Silva RA. *Curr Opin Lipidol.* 2005 Jun; 16(3):295-300.

FOR RESEARCH USE ONLY AND NOT INTENDED FOR DIAGNOSTIC OR THERAPEUTIC USE