



Anti-Albumin, Chicken-Polyclonal Antibody

Catalog No. PY-10105

Antigen species: Human

Host species: Chicken

Quantity: 100µg

Reactivity: Human, chicken

Form: Antigen affinity purified Antibody

Application: Western blot

Target description

Albumin is the protein of the highest concentration in plasma. Albumin transports many small molecules in the blood (for example, calcium, progesterone, and drugs). It is also of prime importance in maintaining the oncotic pressure of the blood (that is, keeping the fluid from leaking out into the tissues). This is because, unlike small molecules such as sodium and chloride, the concentration of albumin in the blood is much greater than it is in the extracellular fluid. Because albumin is synthesized by the liver, decreased serum albumin may result from liver disease. It can also result from kidney disease, which allows albumin to escape into the urine. Decreased albumin may also be explained by or a low protein diet.

Antigen

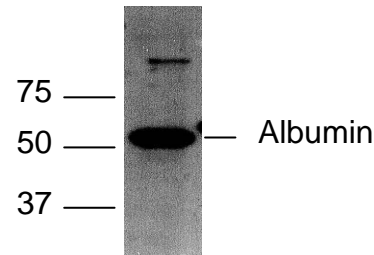
This polyclonal antibody was raised by immunizing chicken with human albumin plasma protein that be derived by *E. coli*

Application

The antibody specificity was assayed by Western blotting with *E. coli* derived albumin serum protein. The antibody titer is more than 5,000 for Western blot analysis. It has not been tested in the other applications. However, for the first testing, we recommend 1/10,000 dilution for ELISA, 1/5,000 dilution for WB of recombinant protein, 1/400 dilution for tissue extracts or cell lysates, 1/100 dilution for immunohistochemistry (IHC) staining on frozen cryosections, 1/50 dilution for IHC staining on paraffin embedded sections.

Related Products

1. Anti-GH, pAb (PY-10103)
2. Anti-Insulin, pAb (PY-10104)
3. Anti-CRP, pAb (PY-10106)
4. Anti-IgE, pAb (PY-10111)
1. Anti-Fibronectin, pAb (PY-10112)



Western blot Protocol

1. Block membrane with 5% non-fat milk in PBS-T for 1 hour at room temperature or longer at 4°C.
2. Incubate membrane with IgY antibodies at dilution of 1: 5,000 with 1% milk in PBS-T at R.T. for 1 h.
3. Rinse 3 times with PBS-T, then wash membrane with PBS-T, 5 min each, total of 3 times.
4. Incubate with 2nd antibody (goat-anti-IgY/Fc-HRP) at dilution 1: 1,000 for ECL (with 1% milk PBS-T) at R.T. for 1 h.
5. Rinse 3 times with PBS-T, then wash with PBS-T, 5 min each with shaking, total of 3 times.
6. Perform ECL detection of signal using Pierce ECL kit.

Storage

It is supplied as antigen affinity purified antibody in lyophilized powder. Redissolve the powder with 100 microliter sterile water will restore to the original concentration 1mg/ml (1×PBS). Store at 4°C for short-term application. For long-term storage, aliquot and store at -20°C.

References

1. Tavoulari S *et al.* The recombinant subdomain IIIB of human serum albumin displays activity of gonadotrophin surge-attenuating factor. *Hum Reprod* 19:849-58 (2004)
2. Mitrogianni Z *et al.* Tyrosine nitration in plasma proteins from patients undergoing hemodialysis. *Am J Kidney Dis* 44:286-92 (2004).

FOR RESEARCH USE ONLY AND NOT INTENDED FOR DIAGNOSTIC OR THERAPEUTIC USE