



Anti-Insulin, Chicken-Polyclonal Antibody

Catalog No. PY-10104 **Quantity:** 100 μ g **Application:** ELISA, Western blot
Antigen species: Human **Reactivity:** Human, mouse, rat, dog, pig and cat.
Host species: Chicken **Form:** Antigen affinity purified Antibody

Target description

Human pancreas beta cell secreted hormone, M.W: 5733. Human serum protein.

Antigen

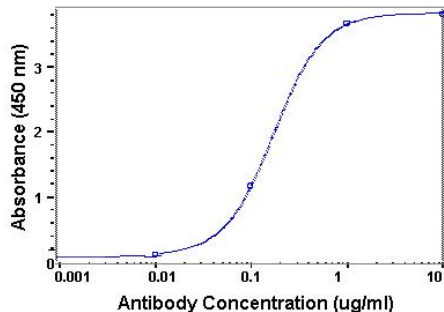
This polyclonal antibody was raised by immunizing chicken with human insulin recombinant protein.

Application

Western blotting, tissue or cell immunostaining, ELISA. Recommended starting dilution for Western blot analysis is 1: 1000, for tissue or cell staining is 1: 500, for ELISA is 1-2 μ g/ml. Optimal working dilutions must be determined by the end user.

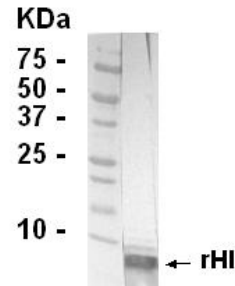
Related Products

1. Anti-GH, pAb (PY-10103)
2. Anti-Albumin, pAb(PY-10105)
3. Anti-CRP, pAb (PY-10106)
4. Anti-IgE, pAb (PY-10111)
5. Anti-Fibronectin, pAb (PY-10112)



ELISA Test:

Recombinant protein as test antigen (5 μ g). Affinity-Purified anti-Insulin IgY as 1st antibody and Goat anti-IgY-HRP as 2nd antibody.



Western blot Protocol

1. Block membrane with 5% non-fat milk in PBS-T for 1 hour at room temperature or longer at 4°C.
2. Incubate membrane with IgY antibodies at dilution of 1: 2,000 with 1% milk in PBS-T at R.T. for 1 h.
3. Rinse 3 times with PBS-T, then wash membrane with PBS-T, 5 min each, total of 3 times.
4. Incubate with 2nd antibody (goat-anti-IgY/Fc-HRP) at dilution 1: 1,000 for ECL (with 1% milk PBS-T) at R.T. for 1 h.
5. Rinse 3 times with PBS-T, then wash with PBS-T, 5 min each with shaking, total of 3 times.
6. Perform ECL detection of signal using Pierce ECL kit.

Storage

It is supplied as antigen affinity purified antibody in lyophilized powder. Redissolve the powder with 100 microliter sterile water will restore to the original concentration 1mg/ml (1 \times PBS). Store at 4°C for short-term application. For long-term storage, aliquot and store at -20°C.

FOR RESEARCH USE ONLY AND NOT INTENDED FOR DIAGNOSTIC OR THERAPEUTIC USE