



## Anti- Mouse IgG, Rabbit Polyclonal Antibody

**Catalog No.:** PG-10011    **Quantity:** 1mg    **Applications tested:** ELISA, Western blot, IP  
**Antigen Species:** Mouse    **Reactivity:** Mouse  
**Host Species:** Rabbit    **Form:** Antigen affinity purified antibodies

### Target description

IgG is a monomeric immunoglobulin, built of two heavy chains gamma and two light chains. Each molecule has two antigen binding sites. This is the most abundant immunoglobulin and is approximately equally distributed in blood and in tissue liquids, constituting 75% of serum immunoglobulins in humans. This is the only isotype that can pass through the human placenta, thereby providing protection to the fetus in its first weeks of life before its own immune system has developed.

### Antigen

This polyclonal antibody was raised by immunizing rabbit with Mouse IgG whole molecule.

### Applications

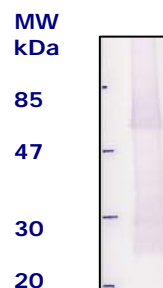
Western Blot analysis (WB): 1,000 ~ 125,000 dilution

ELISA: 2,000 ~ 20,000 dilution

IP: 500 ~ 1,000 dilution

### Related Products

1. Anti-IgE, Chicken pAb (PY-10111)
2. Anti-IgA, Chicken pAb (PY-10126)
3. Anti-IgG Fc fragment, Chicken pAb (PY-10127)
4. Anti-Mouse IgG, Chicken pAb (PY-10128)
5. Anti-Human IgM, Chicken pAb (PY-10130)
6. Anti-Human IgG, Rabbit pAb (PG -10012).



Antibody dilution : 125,000 x

### Western Blot Procedure

1. Protein sample run SDS-PAGE.
2. Blotting with semi-dry electrophoretic transfer system.
3. After transferring, rinse the transfer membrane with ddWater and let it dry.
4. Blocking transfer membrane with 5% skim milk, 0.2% sodium azide inTBS, incubate at 37°C for at least 2 hrs or 4°C O/N.
5. Wash the membrane with 0.05% Tween 20 in TBS (TBST).
6. Add primary Ab sol. and incubate at 37°C for 1 hr. (Ab is diluted in 5% Goat serum/TBS)
7. Wash the membrane 3 times with TBST.
8. Add secondary Ab (Goat anti-rabbit IgG 3000X diluted in 5% Goat serum/TBS) and incubate at 37°C for 1 hr.
9. Wash the membrane 3 times with TBST.
10. Wash the membrane with ddW.
11. Soak the membrane in BCIP/NBT substrate solution, after the color developed, wash with ddWater and let it dry.

### Storage

It is supplied as antigen affinity purified antibody in lyophilized powder. Redissolve the powder with 1ml sterile water will restore to the original concentration 1mg/ml (1xPBS). Store at 4°C for short-term application. For long-term storage, aliquot and store at -20°C.

FOR RESEARCH USE ONLY AND NOT INTENDED FOR DIAGNOSTIC OR THERAPEUTIC USE