



Anti-VP28 of Shrimp white spot syndrome virus, Rabbit-Polyclonal Antibody

Catalog No. GB-10006 **Quantity:** 250µl **Applications tested:** ELISA, Western Blot
Antigen species: Shrimp WSSV **Reactivity:** Shrimp WSSV
Host species: Rabbit **Form:** Antiserum

Target description

White spot syndrome virus (WSSV) occurs worldwide and causes high mortality and considerable economic damage to the shrimp farming industry. The VP28 was one of the envelope proteins of WSSV. Almost all shrimps infected with WSSV in ponds die within 3 to 4 days after the first dead shrimp was observed with gross lesions ranging from abnormal red body discoloration to white spots in the cuticle.

Antigen

This polyclonal antibody was raised by immunizing rabbit with synthetic peptide containing amino acids on the N-terminal domain (1-102) of VP28 of shrimp WSSV.

Application

The antibody titer is more than 490K for ELISA and 1000 × for Western Blot. However, it has not been tested in the other applications. For the first testing, we recommend 1/5,000 dilution for ELISA, 1/1000 dilution for Western blot analysis (WB) of recombinant protein, 1/400 dilution for tissue extracts or cell lysates, 1/100 dilution for immunohistochemistry (IHC) staining on frozen cryosections, 1/50 dilution for IHC staining on paraffin embedded sections.

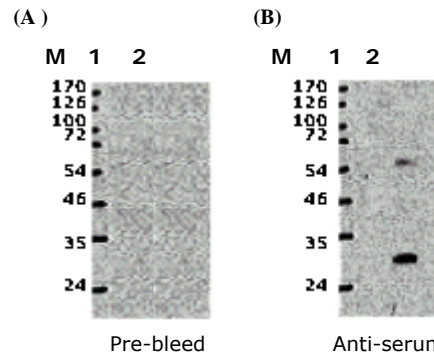
Related Products

1. Anti-VP28 of WSSV pAb (GB- 10355)
2. Anti-VP664 of WSSV pAb (GB-10372)
3. Anti-VP26 of WSSV pAb (GB-10382)

dilution	Pre-bleed	Anti-serum
1:1K	0.063	1.512
1:10K	0.052	0.582
1:100K	0.046	0.171
1:1,000K	0.041	0.062
Titer		~490 K

ELISA protocol

Antigen is coated on EIA strips at 1µg per well. Add 200µl of blocking buffer and then wash wells with PBST buffer. Antiserum GB-10006 is diluted in series as 10³~10⁶ folds and added in separate wells. Incubate antibody for 1hr. Wash unbound antibodies and add anti-rabbit IgG-HRP conjugate. Wash the plate and add substrate to develop color for 5 min. Read absorbance (ABS) at 650 nm. Amount of color is directly proportional to the amount of antibodies. Antibody titer is defined as >0.1 of ABS of antiserum minus pre-bleed serum.



Lane1: Control (*E. Coli* total cell lysate before IPTG induction)

Lane2: recombinant VP28 protein expression after IPTG induction
1000X diluted of GB-10006 antibody

Western blot Protocol

Antigens are loaded 2ug per well in 12% SDS-PAGE. Block membranes with 3% BSA in TBS buffer at RT, 1hr. Wash the membrane with 0.05% Tween 20 in TBS (TBST). Incubated membranes with diluted antiserum (1000x) at RT for 1 hours. Wash unbound antibodies and add anti-rabbit IgG-HRP conjugated at RT for 1 hours. Wash the membrane and add substrate to develop for 1 min.

Storage

It is supplied as lyophilized serum. Redissolve the lyophilized powder with 250 microliter sterile water will restore the original condition. Store at 4°C for short term application. For long-term storage, aliquot and store at -20°C.

References

1. Tsai JM, Wang HC, Leu JH, Hsiao HH, Wang AH, Kou GH, Lo CF. Genomic and proteomic analysis of thirty-nine structural proteins of shrimp white spot syndrome virus. *J Virol.* 2004 Oct;78(20):11360-70.
2. Witteveldt J, Cifuentes CC, Vlak JM, van Hulten MC.. Protection of *Penaeus monodon* against white spot syndrome virus by oral vaccination. *J Virol.* 2004 Feb;78(4):2057-61.

FOR RESEARCH USE ONLY AND NOT INTENDED FOR DIAGNOSTIC OR THERAPEUTIC USE